



Lining

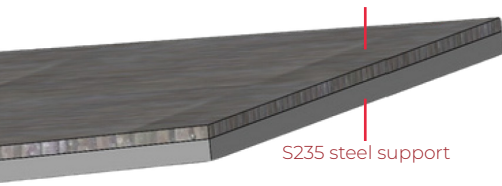
# CROMDES 700P®

## NON-STICK AND ANTI-WEAR BIMETALLIC PLATE

CROMDES 700P plates are bimetallic plates that combine an S235 structural steel substrate with a smooth anti-abrasive chromium carbide-based coating with a hardness of 1400Hv, which is applied through a fusion process.



Cromdes 700P coating



- + Smooth surface
- + Very low cracking
- + High impact and abrasion resistance

## MAIN PROPERTIES AND ADVANTAGES

**Optimized surface:** The coating features a completely smooth surface with very low adherence, which is free of cracks.

**High resistance:** Offers excellent resistance to extreme abrasion, impact, and temperatures up to 500°C.

**Anti-clogging effect:** Thanks to its smooth finish, it optimizes material flow and prevents obstructions or clogging.

**Proven superior performance:** In mass loss tests (according to ASTM G65 standard), CROMDES 700P proves to be 25 times more resistant than conventional S235 steel and 3-6 times superior to 500 HB steel.

**Structural quality:** Guarantees constant hardness, controlled fusion, and a very low level of stress

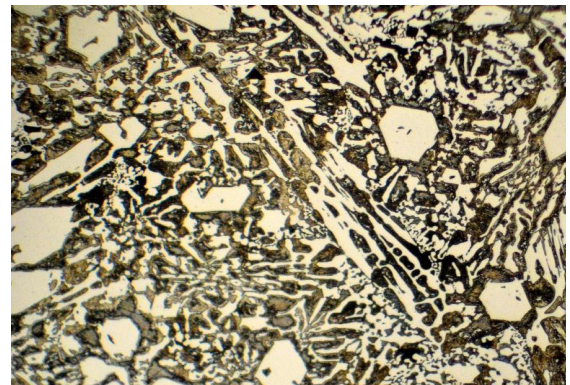
## CHEMICAL COMPOSITION (OF THE COATING IN % MASS)

C Carbon	Cr Chromium	Mn Manganese	Mo Molybdenum	Ti + Nb + V Titanium+Niobium+ Vanadium
3.60	< 30	< 1.50	< 1.50	< 1.60

## MECHANICAL PROPERTIES

The mechanical strength of the plate lies in the steel substrate, while the top layer acts exclusively as an abrasion resistance barrier (without its own structural mechanical characteristics).

**Coating hardness:** 59–62 HRC



# CROMDES 700P®



Revestimiento

## AVAILABLE DIMENSIONS AND THICKNESSES

**Standard format:** 3000 x 1000 mm

**Thicknesses (Substrate + Coating):** 5+5 mm, 6+6 mm, 10+10 mm y 12+12 mm

## APPLICATION AND INSTALLATION GUIDELINES

**Cutting:** CROMDES 700P plates have good suitability for being cut using conventional methods such as laser or plasma

**Bending:** Due to the hard nature of the coating, bending requires precautions. The cladding must always remain on the outside of the bending radius. The minimum allowed bending radius is 15 times the total thickness of the plate

**Welding:** The material is mechanically weldable. It is essential to ensure that joints are always made through the base steel substrate using a suitable filler material. If a complementary cladding or touch-up is required, the use of CROMDES 700 welding wire is recommended.

## MAIN APPLICATIONS

CROMDES 700P plates can be supplied in both standard formats and already cut or shaped according to drawings as per the client's needs. They are ideal for applications subject to heavy wear and continuous flow, such as:

- Screening equipment.
- Impact shielding
- Sliding plates
- Hoppers and chutes
- Fans



Optimized  
sliding



Optimized machine  
performance