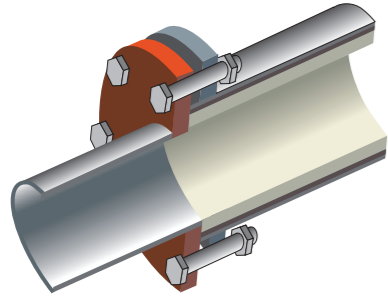
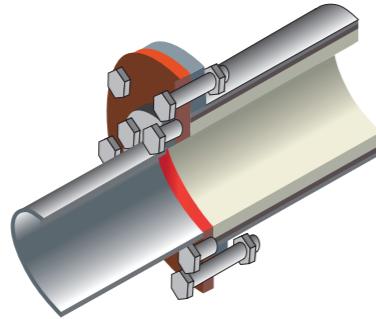


COUPLING SYSTEMS

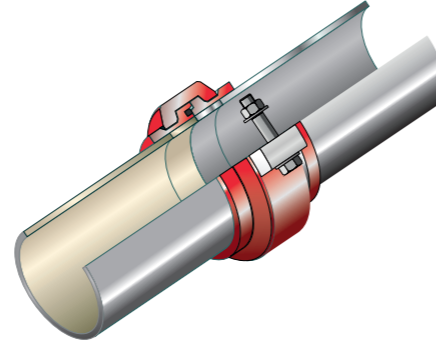
Conversion flanges



Intermediate flanges



Victaulic-type coupling systems

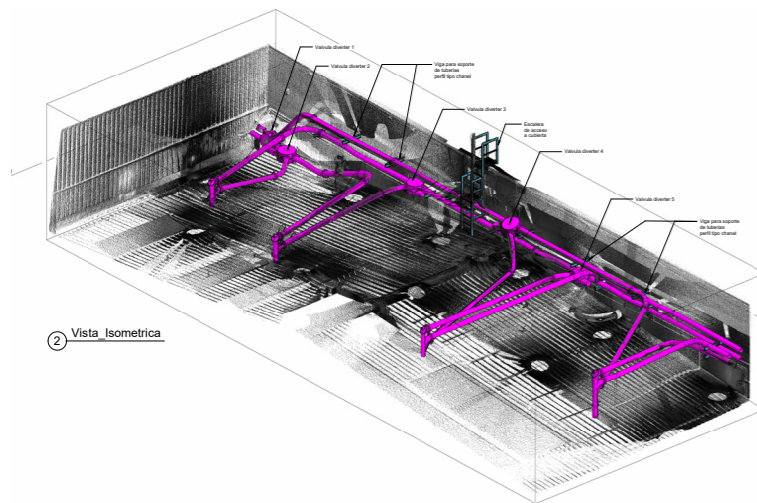


INGENIERÍA INVERSA

At Tecnodesgast, we offer a **reverse engineering service based on high-definition 3D scanning**, using terrestrial scanners and drones to generate **precise point clouds** that faithfully **reproduce the actual geometry of the installation**.

From this digital model, we produce accurate drawings and measurements, providing a reliable basis for planning improvements, replacements or expansions, **reducing errors and downtime during the engineering phase**.

Service available **subject to prior quotation**, depending on the complexity of each project.



TECNODESGAST®
Anti-wear technology

Maximum efficiency. Minimum wear.

Your process keeps running.



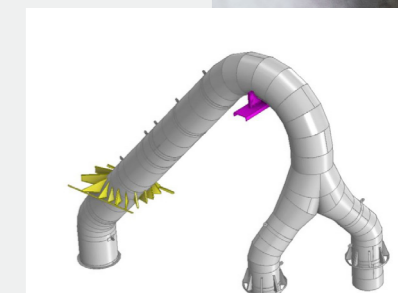
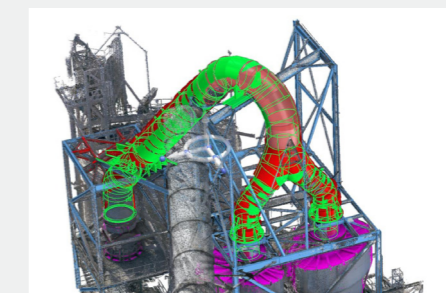
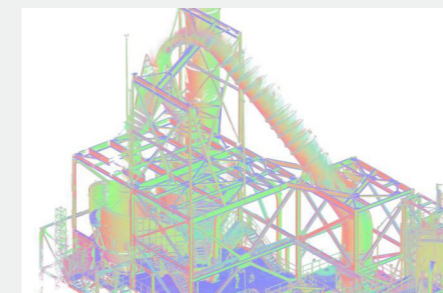
TECNODESGAST®
Tecnología del desgaste

Avenida de Cabrera 36 Planta baja
Edificio Torre D'Ara
08302 Mataró
(Barcelona)
Spain

Phone +34 935 552 152

Mail info@tecnodesgast.com

Web tecnodesgast.com



TUBES

WWW.TECNODESGAST.COM

HARDES 450/700®

Wear-resistant steel piping alloyed for medium and heavy impact conditions.

TECHNICAL DATA

	HARDNESS VICKERS	ANALYSIS				
HARDES 450®	≤ 450	C	Cr	Mn	Mo	-
HARDES 700®	≤ 700	C	Cr	Mn	Mo	Ni

INTERNAL BORE DIAMETERS

HARDES 450®	From 80 mm to 200 mm
HARDES 700®	From 80 mm to 150 mm

AVIABLE HARDES ELBOWS

Radius	750	1000	1500	2000	2500	3000
Angles	90°	90°	60°	45°	45°	30°
	60°	60°	45°	30°	30°	15°
	45°	45°	30°	15°	15°	--



CROMDES 700/800/850/950®

Bimetallic Pipes. High-strength steel with excellent abrasion and impact resistance.

TECHNICAL DATA

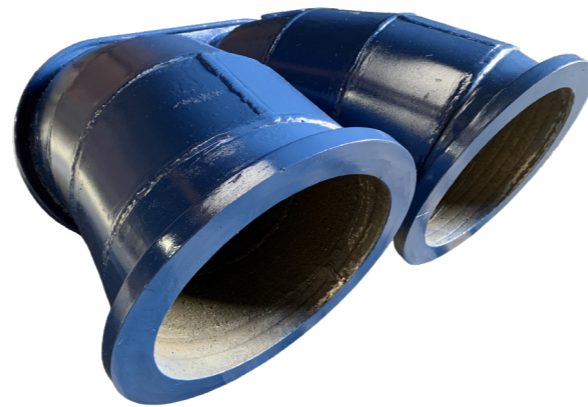
HARDNESS (medium)	ANALYSIS	OPERATING TEMPERATURE
de 700 a 950 Vickers	C-Cr-Mo-Nb-V-W-B	de 500 a 800°C

TUBES

INTERNAL BORE DIAMETERS	from 100 mm to 250 mm
-------------------------	-----------------------

AVIABLE CROMDES ELBOWS

Radius	500	750	1000	1500	2000	2500	3000
Angles	90°	90°	90°	60°	45°	45°	30°
	60°	60°	60°	45°	30°	30°	15°
	45°	45°	45°	30°	15°	15°	--



BASALDES 800®

Cast Basalt. This material provides excellent resistance to abrasion, chemical attack, and offers very good sliding properties.

TECHNICAL DATA

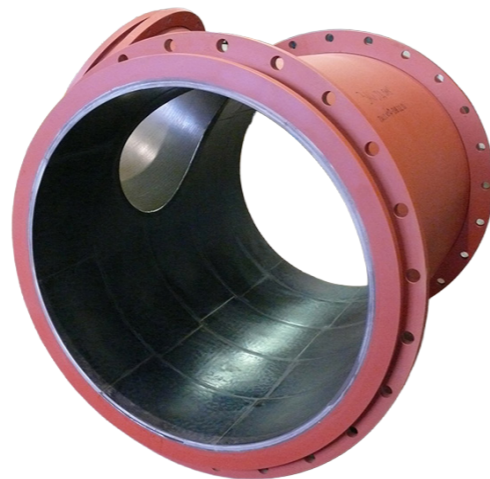
HARDNESS (Vickers)	DENSITY gr/cm³	ABRASION RESISTANCE	THERMAL CONDUCTIVITY	THERMAL EXPANSION	OPERATING TEMPERATURE
720-800	2,90	3-4 cm³ / 50 cm² (máx.) (DIN 52108)	1,1-1,7 W/m.K	9 x 10 ⁻⁶ K ⁻¹ 2-400 °C	Normal: 400 °C (máx:600°C without abrupt changes)

TUBES

INTERNAL BORE DIAMETERS	from 25 mm to 610 mm
-------------------------	----------------------

AVIABLE BASALDES ELBOWS

Radius	750	1000	1500	2000	2500	3000
Angles	90°	90°	60°	45°	45°	30°
	60°	60°	45°	30°	30°	15°
	45°	45°	30°	15°	15°	--



ALUDES 1500® TUBOFLEX 650/1500®

92% sintered alumina, versatile and long-lasting, suitable for high abrasion resistance. It is also supplied in flexible hoses lined with alumina (Tuboflex).

TECHNICAL DATA

	COMPOSITION	HARDNESS (Vickers)	Op. Temp.	INTERNAL DIAMETERS
ALUDES 1500®	Al2 O3 92%	≤ 1500	1000°C máx	from 40 to 250 mm Large-diameter pipes with ceramic tile lining
TUBOFLEX 650®	Cr-Ni	≤ 650	400°C máx	de 20 a 150 mm
TUBOFLEX 1500®	Al2 O3 92%	≤ 1500	120°C máx	de 25 a 300 mm

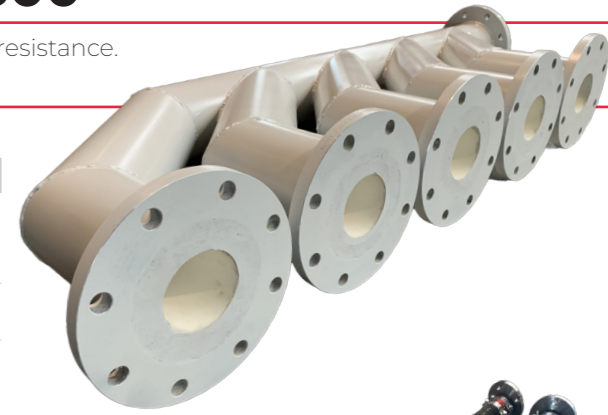
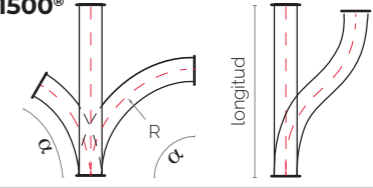
AVIABLE ALUDES ELBOWS

Radius	750	1000	1500	2000	2500	3000
Angles	90°	90°	60°	45°	45°	30°
	60°	60°	45°	30°	30°	15°
	45°	45°	30°	15°	15°	--

TUBOFLEX 650/1500®

$$L = \frac{R \cdot \alpha}{57,3}$$

Pipe length according to the desired angle and radius



ZIRDES 2000®

Fused alumina especially suitable for extremely severe abrasive-stress conditions involving high temperature and thermal shock.

TECHNICAL DATA

HARDNESS Vickers	DENSITY gr/cm³	ABRASION RESISTANCE	THERMAL CONDUCTIVITY	THERMAL EXPANSION	OPERATING TEMPERATURE
≤ 2000	3,5	0,75-1 cm³ / 50 cm² (máx.) (DIN 52108)	4,4 W/m.K	8 x 10 ⁻⁶ K ⁻¹ 0-400 °C	Normal: 1400 °C (máx.)

TUBES

INTERNAL DIAMETERS	From 25 mm to 610 mm
--------------------	----------------------

AVIABLE ZIRDES ELBOWS

Radius	750	1000	1500	2000	2500	3000
Angles	90°	90°	60°	45°	45°	30°
	60°	60°	45°	30°	30°	15°
	45°	45°	30°	15°	15°	--



CARBUDES 2300®

Sintered silicon carbide. Hardness up to 2300 Vickers, resistance to chemical attack, and extremely high resistance to friction wear are among its most notable properties.

TECHNICAL DATA

HARDNESS (medium)	DENSITY gr/cm³	THERMAL CONDUCTIVITY	THERMAL EXPANSION	OPERATING TEMPERATURE
2300 Vickers	3,15	115 W/m.K (20 a 600°C)	4,2x10 ⁻⁶ K ⁻¹ (20 a 600°C)	1400°C máxímoáx)

TUBES

INTERNAL DIAMETERS	From 40 mm to 250 mm Large-diameter pipes with ceramic tile lining
--------------------	--

AVIABLE CARBUDES ELBOWS

Radius	500	750	1000	1500	2000	2500	3000
Angles	90°	90°	90°	60°	45°	45°	30°
	60°	60°	60°	45°	30°	30°	15°
	45°	45°	45°	30°	15°	15°	--

